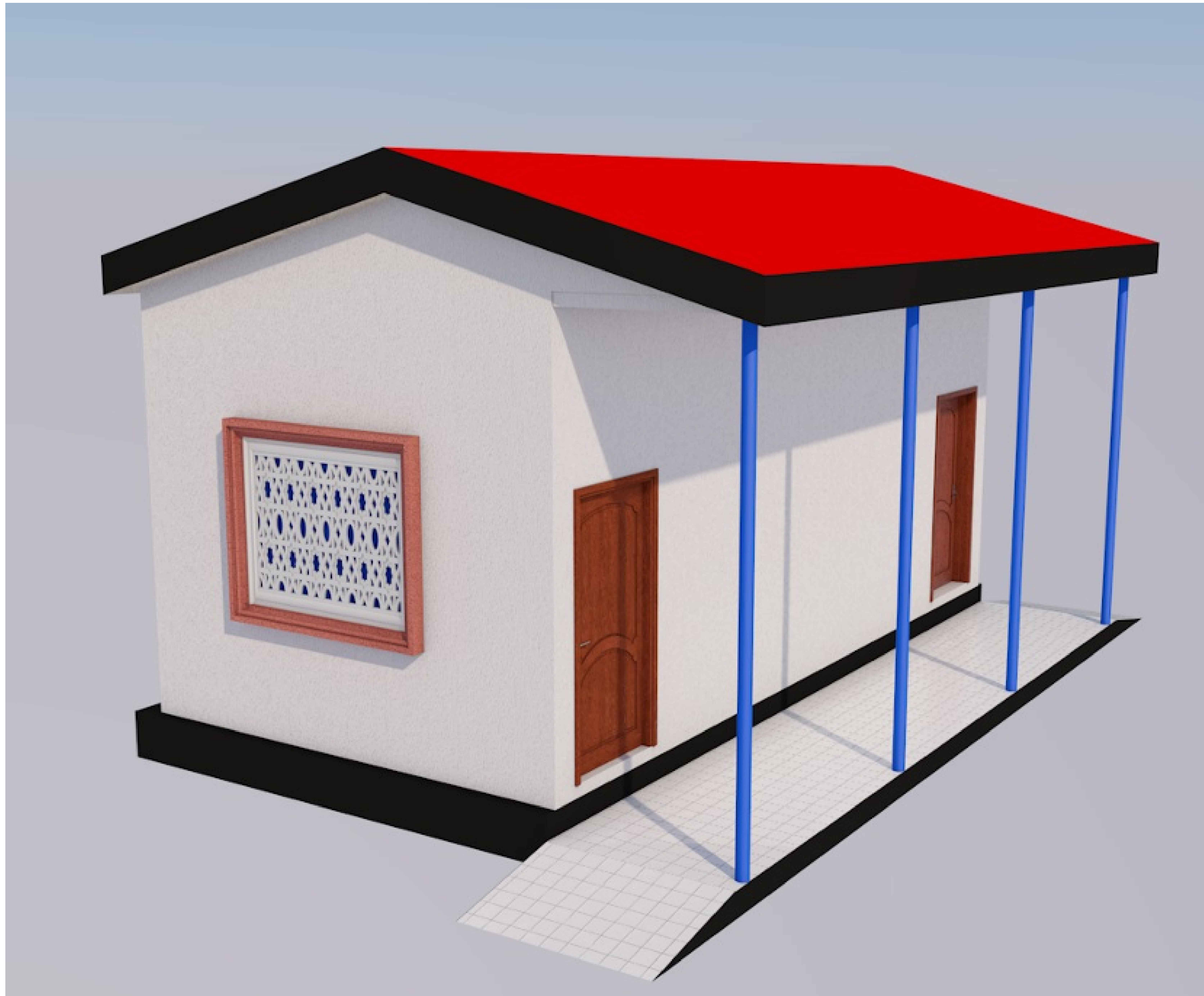
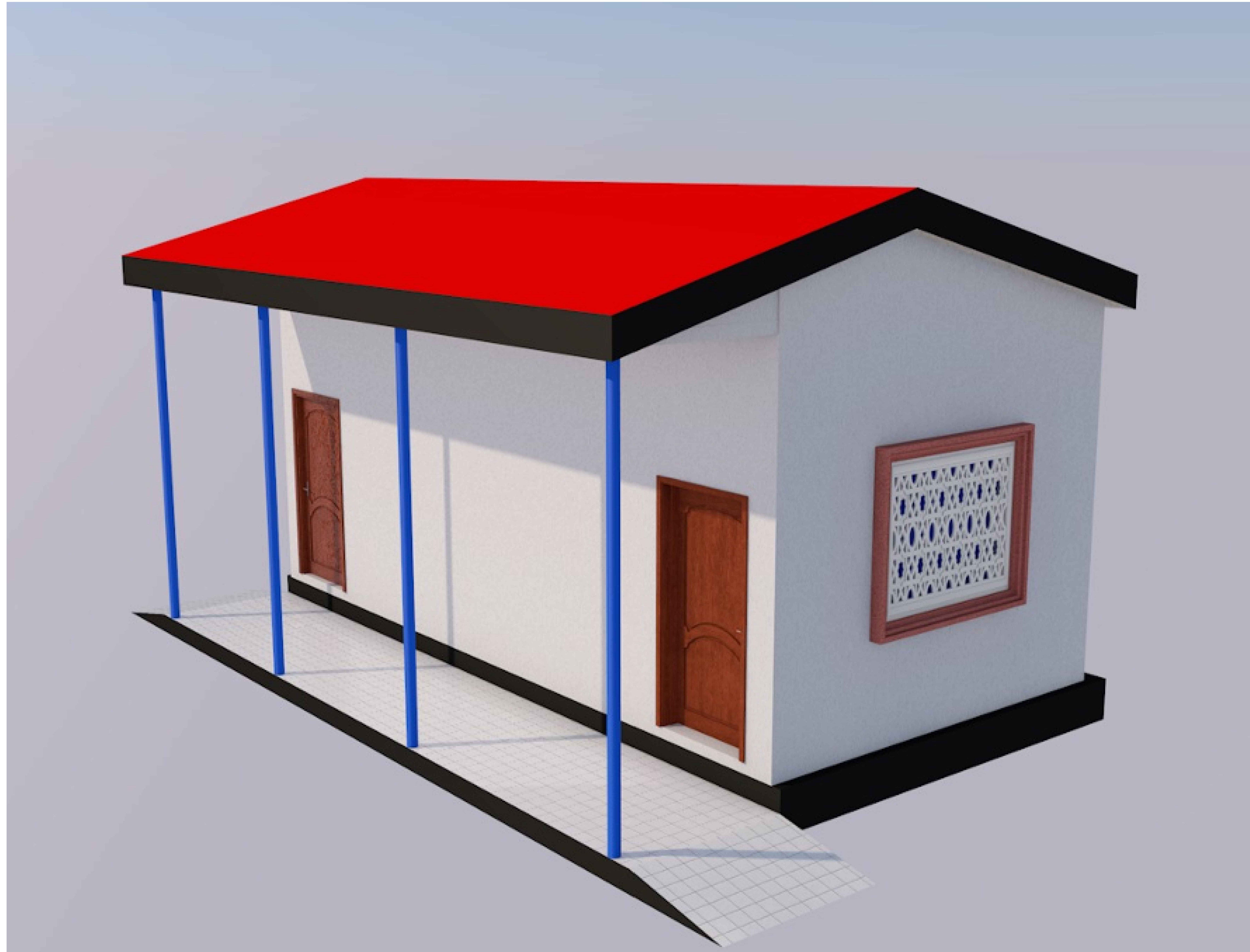




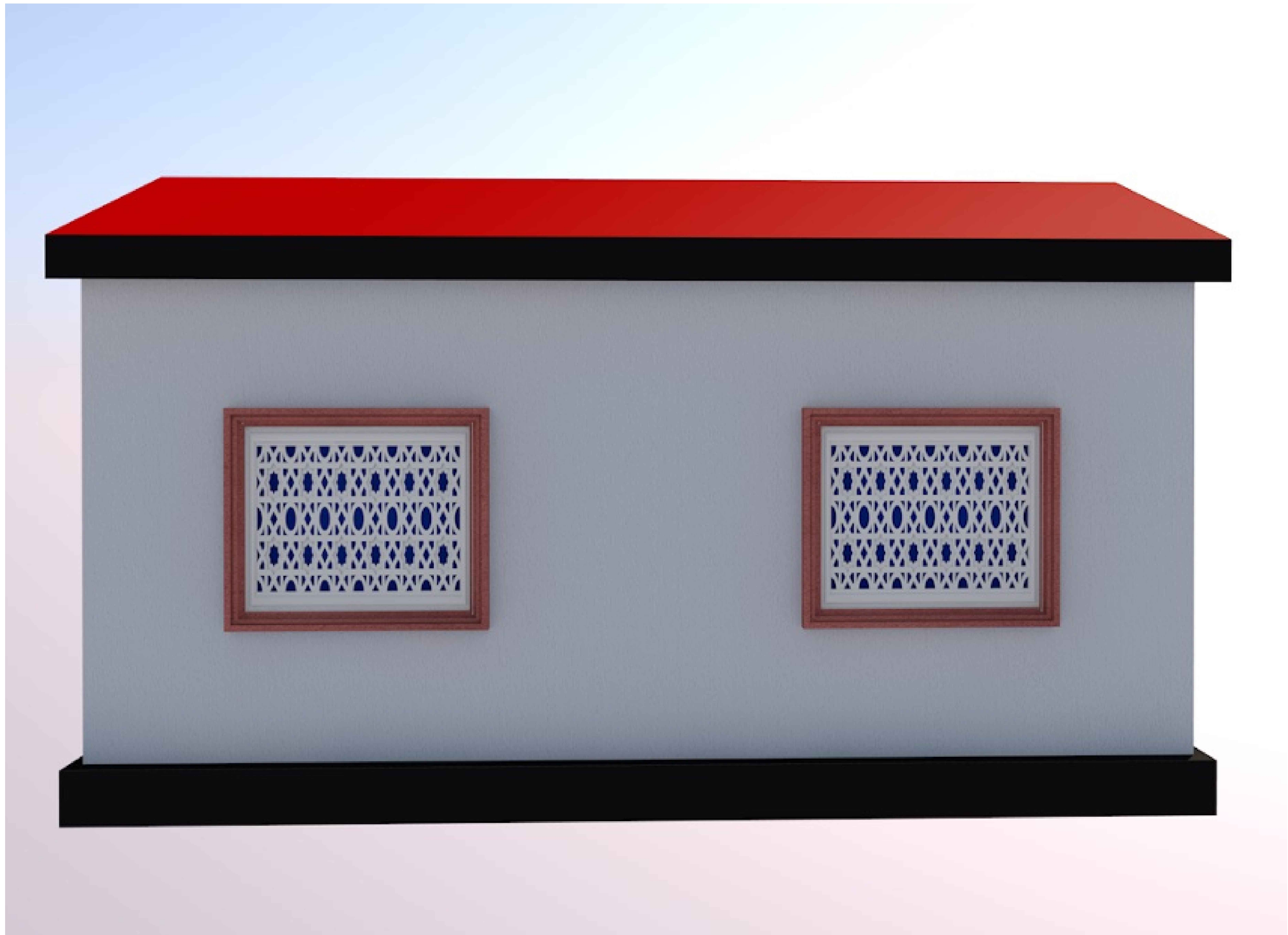
| Organization | Project | Location | Drawing Title | DRG. NO. | Drawn by | Yahye Ali |
|-----------------------------|---------|-------------------------|--|----------|-------------|-----------------|
| World Vision International, | BHA | Togdher, Somaliland. | Mother Baby Area (MBA), Front View. | 1 | Reviewed by | Yahye Omer |
| | | | | | Approved by | Wycliffe Owino |
| | | | | | Scale | As Shown |
| | | | | | Date | September, 2024 |



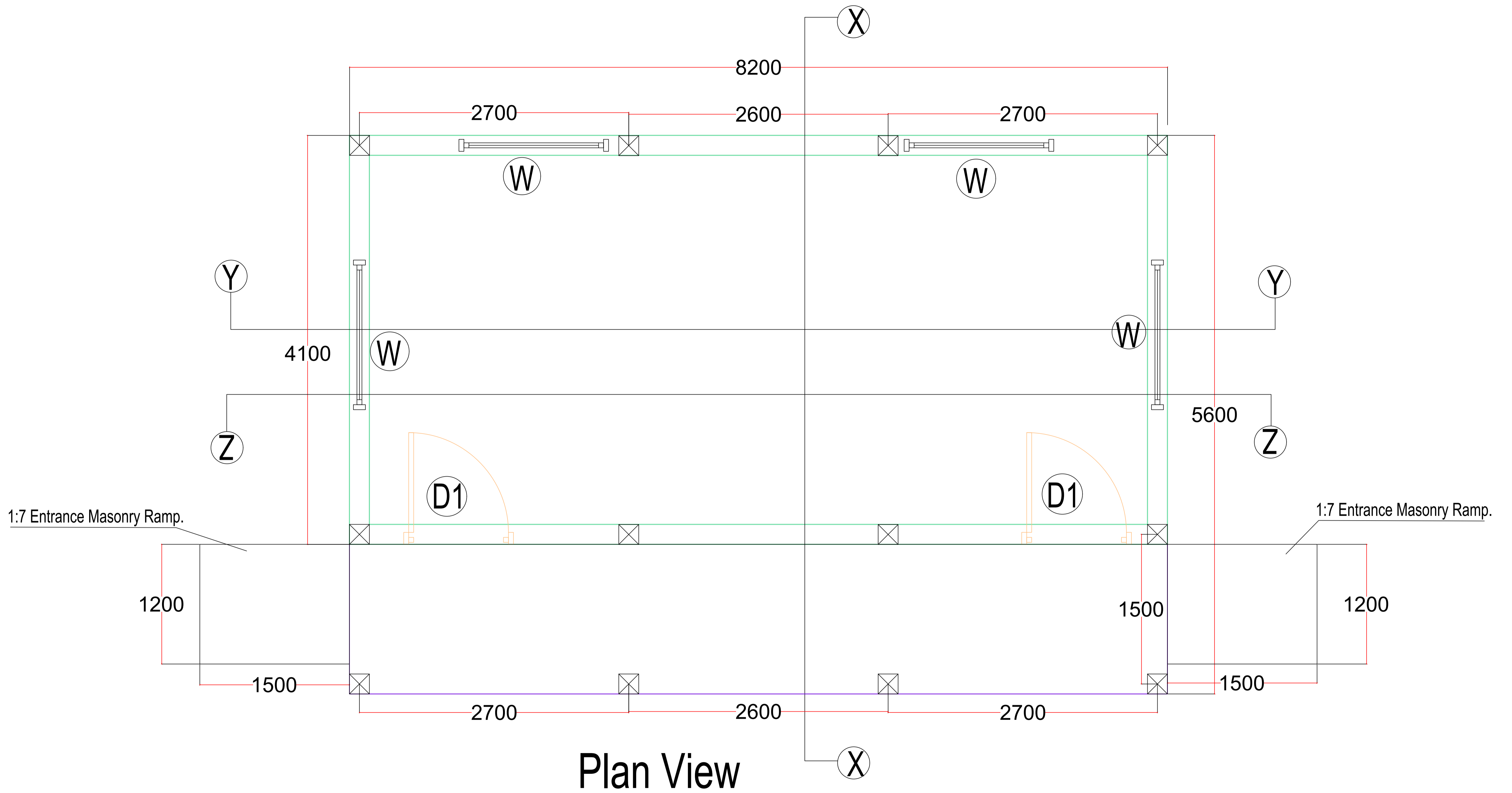
| Organization | Project | Location | Drawing Title | DRG. NO. | Drawn by | Yahye Ali |
|-----------------------------|---------|-------------------------|-------------------------------------|----------|-------------|----------------|
| World Vision International. | BHA | Togdher, Somaliland. | Mother Baby Area (MBA), 3D View. | 2 | Reviewed by | Yahye Omer |
| | | | | | Approved by | Wycliffe Owino |
| | | | | | Scale | As Shown |
| | | | | | Date | September,2024 |



| | | | | | | |
|-----------------------------|---------|-------------------------|-------------------------------|-----------------|-------------|----------------|
| Organization | Project | Location | Drawing Title | <u>DRG. NO.</u> | Drawn by | Yahye Ali |
| World Vision International. | BHA | Togdher, Somaliland. | Mother Baby Area, 3D View. | 3 | Reviewed by | Yahye Omer |
| | | | | | Approved by | Wycliffe Owino |
| | | | | | Scale | As Shown |
| | | | | | Date | September,2024 |



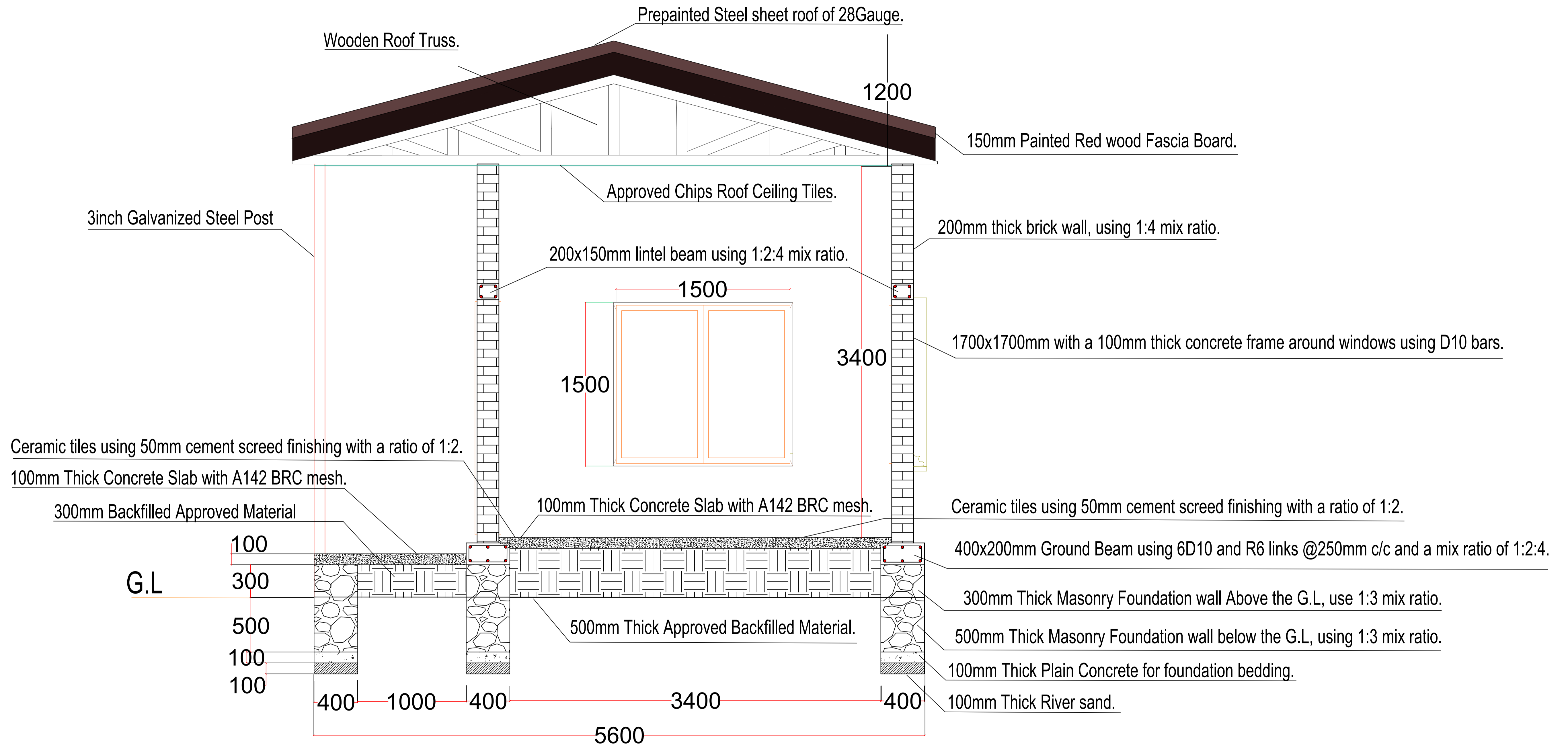
| | | | | | | |
|-----------------------------|---------|-------------------------|---------------------------------|-----------------|-------------|----------------|
| Organization | Project | Location | Drawing Title | <u>DRG. NO.</u> | Drawn by | Yahye Ali |
| World Vision International. | BHA | Togdher, Somaliland. | Mother Baby Area, Back View. | 4 | Reviewed by | Yahye Omer |
| | | | | | Approved by | Wycliffe Owino |
| | | | | | Scale | As Shown |
| | | | | | Date | September,2024 |



Notes

1. All dimensions are in mm unless otherwise specified. This drawing to be read in conjunction with all other relevant drawings.
2. Drawings are not to be scaled.
3. The contractor must check and verify all dimensions on site before commencement on any work.
4. Reinforcement cover to the beams= 25mm, to column = 25mm and to slab = 50mm
5. Walls are Hollow Block wall of 200mm thickness, it should be jointed with 1:4 cement sand mortar, and For Foundation 1:3 mix ratio.
6. All Electrical works must be done to Electrical Engineers approval. consumer units, distribution board, meter board and sockets should be flush wall

| | | | | | |
|---------|----------|-------------------------|-------------------|------------------------|-----------------|
| Project | Location | Drawing Title | DRG. NO. 5 | Drawn by | Yahye Ali |
| | BHA | Togdher, Somaliland. | | Mother Baby Are (MBA). | Reviewed by |
| | | | | Approved by | Wycliffe Oowino |
| | | | | Scale | As Shown |
| | | | | Date | September, 2024 |

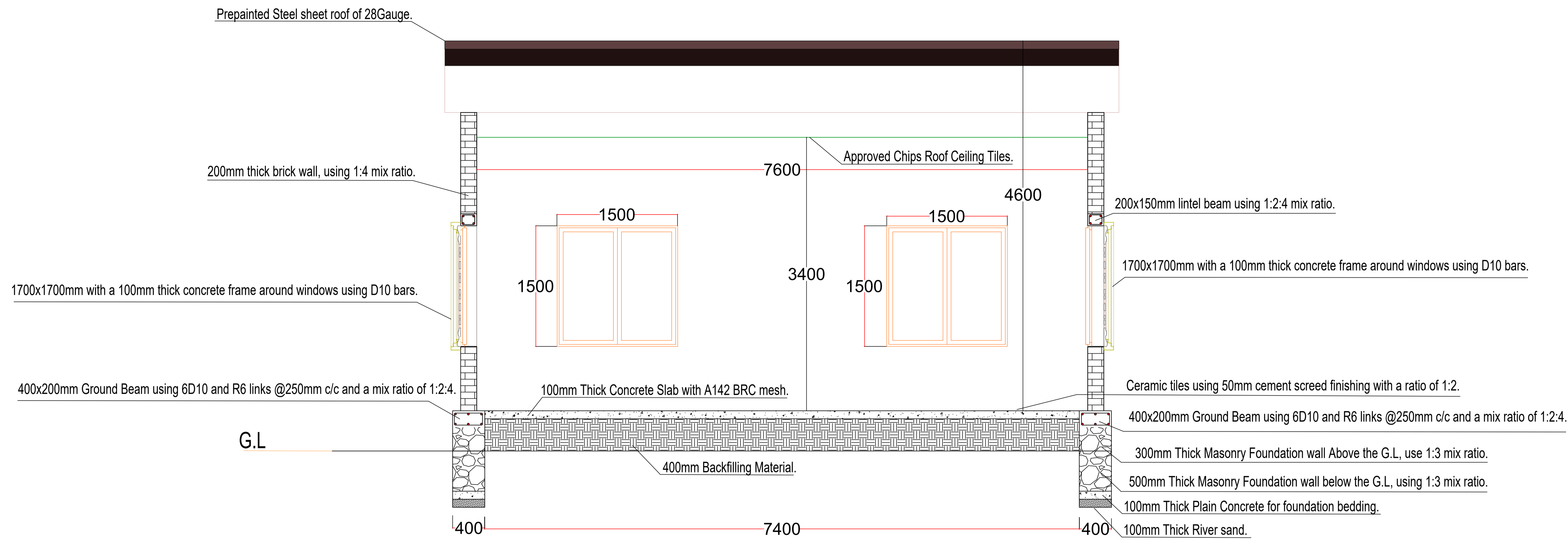


Section X-X

Notes

1. All dimensions are in mm unless otherwise specified.
This drawing to be read in conjunction with all other relevant drawings.
2. Drawings are not to be scaled.
3. The contractor must check and verify all dimensions on site before commencement on any work.
4. Reinforcement cover to the beams= 25mm, to column = 25mm and to slab = 50mm
5. Walls are Hollow Block wall of 200mm thickness, it should be jointed with 1:4 cement sand mortar, and For Foundation 1:3 mix ratio.
6. All Electrical works must be done to Electrical Engineers approval. consumer units, distribution board, meter board and sockets should be flush wall

| | | | | | | | |
|--|--------------|---------|----------|---------------|---------|-------------|-----------------|
| | Organization | Project | Location | Drawing Title | DRG. NO | Drawn by | Yahye Ali |
| | | | | | | Reviewed by | Yahye Omer |
| | | | | | | Approved by | Wycliffe Owino |
| | | | | | | Scale | As Shown |
| | | | | | | Date | September, 2024 |

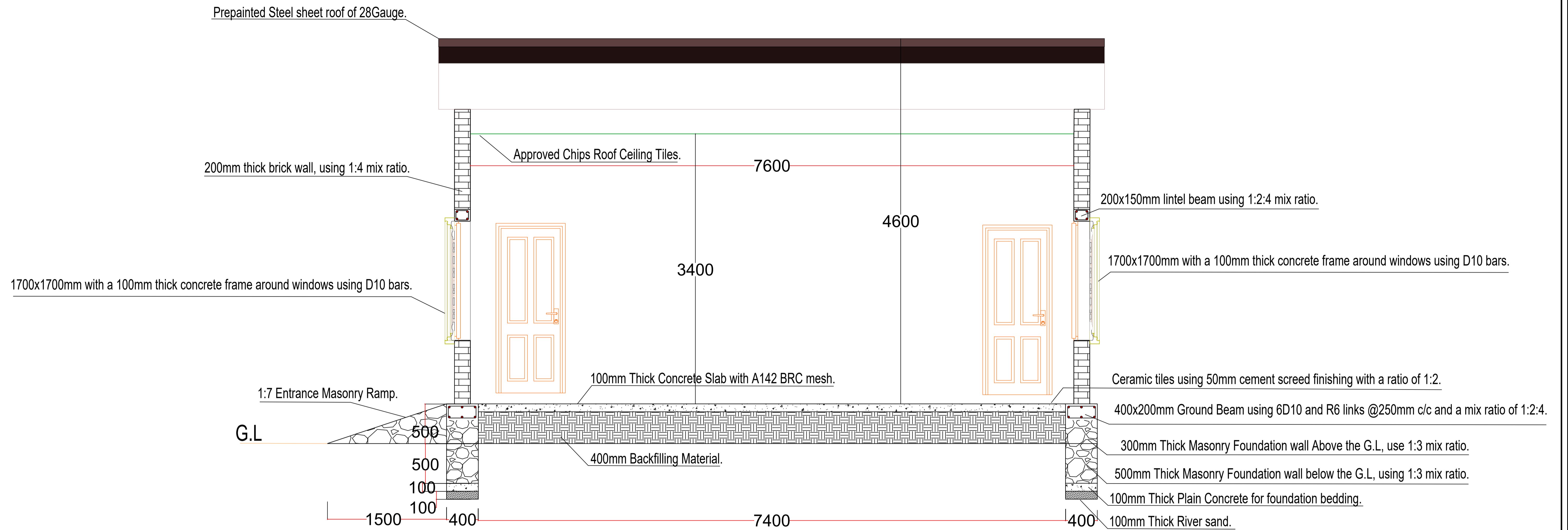


Section Y-Y

Notes

1. All dimensions are in mm unless otherwise specified.
This drawing to be read in conjunction with all other relevant drawings.
2. Drawings are not to be scaled.
3. The contractor must check and verify all dimensions on site before commencement on any work.
4. Reinforcement cover to the beams= 25mm, to column = 25mm and to slab = 50mm
5. Walls are Hollow Block wall of 200mm thickness, it should be jointed with 1:4 cement sand mortar, and For Foundation 1:3 mix ratio.
6. All Electrical works must be done to Electrical Engineers approval. consumer units, distribution board, meter board and sockets should be flush wall

| Organization | Project | Location | Drawing Title | DRG. NO | Drawn by | Yahye Ali |
|--------------|---------|--|---------------|---------|-------------|-----------------|
| | BHA | Dhobane H.F Togdher, Somaliland. | Section Y-Y | 7 | Reviewed by | Yahye Omer |
| | | | | | Approved by | Wycliffe Owino |
| | | | | | Scale | As Shown |
| | | | | | Date | September, 2024 |

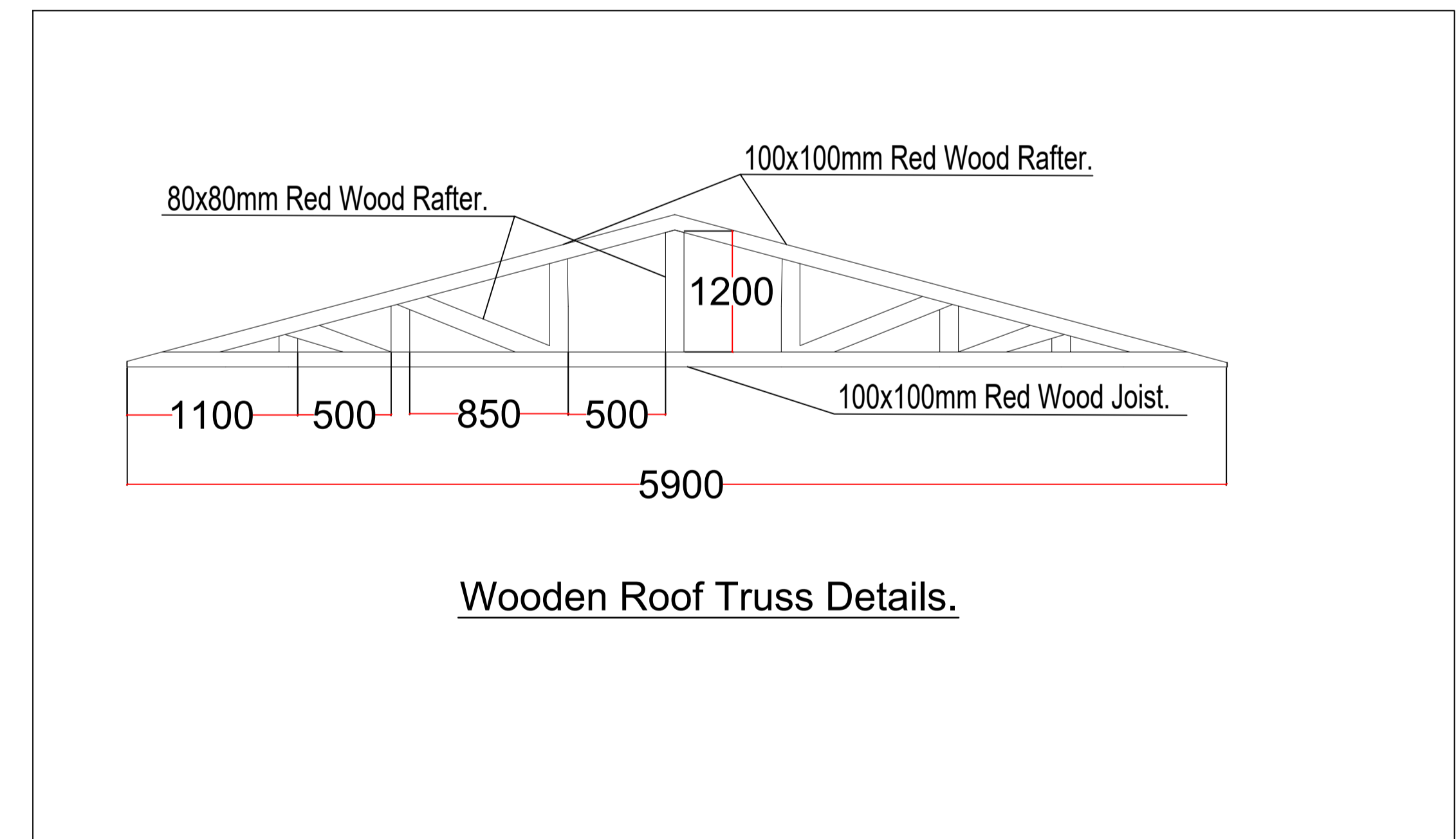
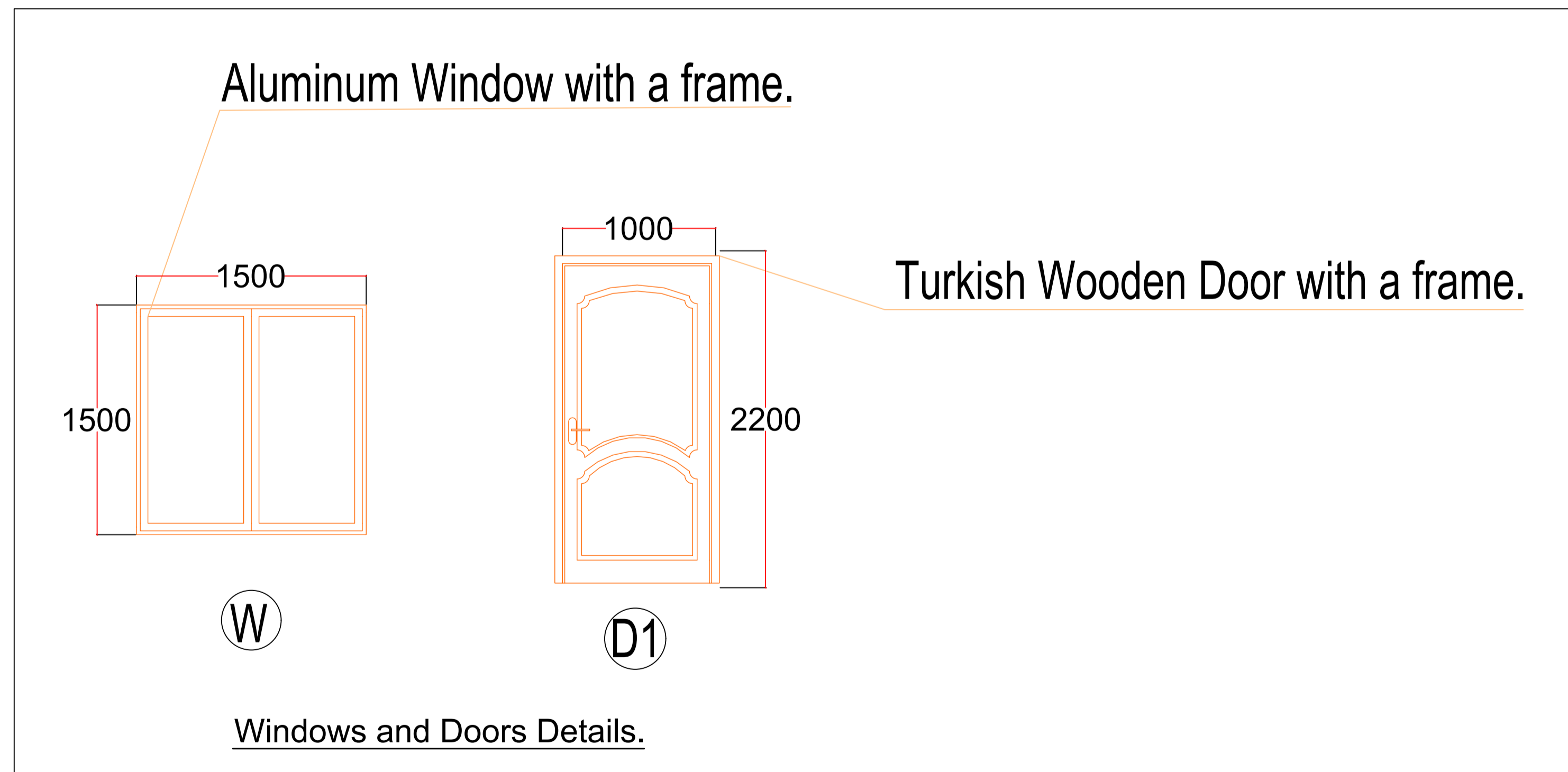
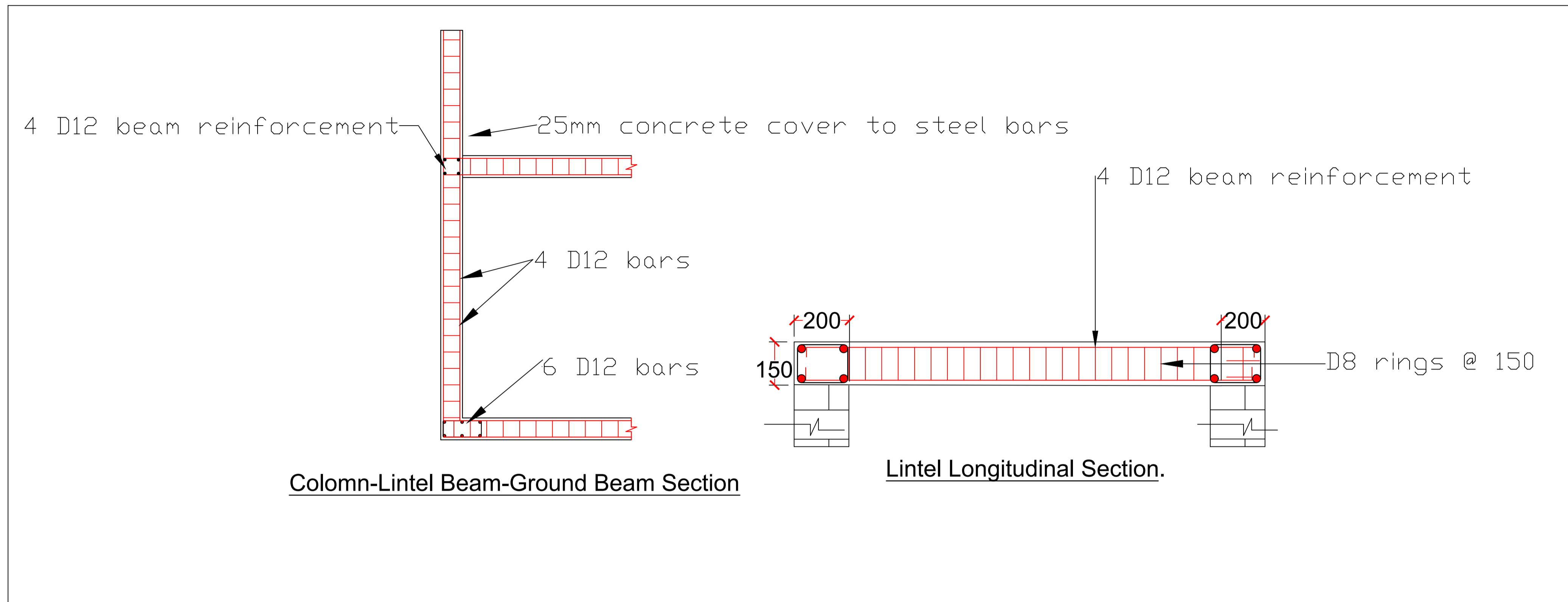


Section Z-Z

Notes

1. All dimensions are in mm unless otherwise specified.
This drawing to be read in conjunction with all other relevant drawings.
2. Drawings are not to be scaled.
3. The contractor must check and verify all dimensions on site before commencement on any work.
4. Reinforcement cover to the beams= 25mm, to column = 25mm and to slab = 50mm
5. Walls are Hollow Block wall of 200mm thickness, it should be jointed with 1:4 cement sand mortar, and For Foundation 1:3 mix ratio.
6. All Electrical works must be done to Electrical Engineers approval. consumer units, distribution board, meter board and sockets should be flush wall

| | | | | | | |
|--------------|---------|--|---------------|---------|-------------|-----------------|
| Organization | Project | Location | Drawing Title | DRG. NO | Drawn by | Yahye Ali |
| | BHA | Dhobane H.F Togdher, Somaliland. | Section Z-Z | 8 | Reviewed by | Yahye Omer |
| | | | | | Approved by | Wycliffe Owino |
| | | | | | Scale | As Shown |
| | | | | | Date | September, 2024 |



- Notes
- All dimensions are in mm unless otherwise specified. This drawing to be read in conjunction with all other relevant drawings.
 - Drawings are not to be scaled.
 - The contractor must check and verify all dimensions on site before commencement on any work.
 - Reinforcement cover to the beams= 25mm, to column = 25mm and to slab = 50mm
 - Walls are Hollow Block wall of 200mm thickness, it should be jointed with 1:4 cement sand mortar, and For Foundation 1:3 mix ratio.
 - All Electrical works must be done to Electrical Engineers approval. consumer units, distribution board, meter board and sockets should be flush wall

| Organization | Project | Location | Drawing Title | DRG. NO | Drawn by | Yahye Ali |
|--------------|---------|----------------------------------|---|---------|-------------|-----------------|
| World Vision | BHA | Dhobane H.F Togdher, Somaliland. | Lintel, Ground Beam, Colomn, truss, Door and Windows details. | 9 | Reviewed by | Yahye Omer |
| | | | | | Approved by | Wycliffe Owino |
| | | | | | Scale | As Shown |
| | | | | | Date | September, 2024 |